

ONLINE Metro™

Multiservice DWDM Transport Platform

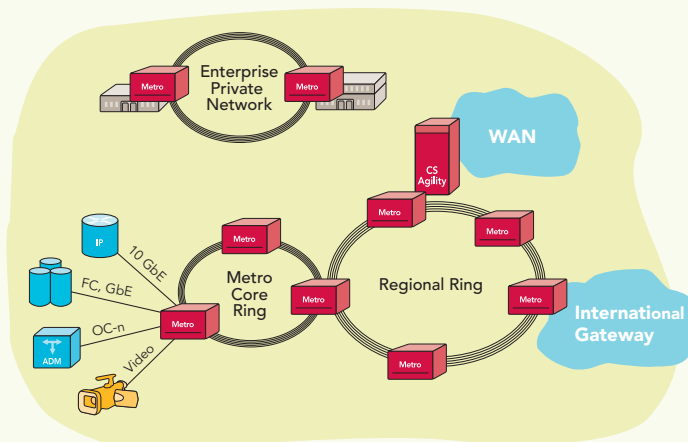


DENSE WAVELENGTH DIVISION MULTIPLEXING IS PROVEN AND EFFECTIVE in providing the utmost in fiber and bandwidth scalability—opening the door for service providers to offer a new class of high-capacity optical services. Combining DWDM with sub-wavelength aggregation allows carriers and enterprises to more efficiently scale DWDM infrastructure by lowering the unit cost per transported bit, while maintaining full service transparency. Economic advantage, deployment flexibility and management visibility are FlexSelect™ attributes Ciena brings to the DWDM environment.

CIENA'S ONLINE METRO MULTI-SERVICE DWDM TRANSPORT PLATFORM PROVIDES CARRIER-CLASS SOLUTIONS for both carrier and enterprise environments. Various network topologies can be supported at distances from tens to hundreds of kilometers and bandwidth in excess of 320 Gb/s on a fiber, complete with SONET/SDH and optical protection options for 99.999% availability. Intelligent, dynamic optical power management completes the picture, enabling graceful capacity upgrades without the need for manual adjustment.

Multi-protocol functions include the widest range of optical interfaces covering Gigabit and 10-Gigabit Ethernet, Fibre Channel (FC), FICON™, ESCON®, SONET/SDH and Digital Video—all with performance monitoring visibility. ONWAVE sub-wavelength aggregation and switching enables efficient transport of these rates using combinations of both 2.5 Gb/s and 10 Gb/s wavelengths in the network.

Integrated SONET/SDH Add/Drop Multiplexer (ADM) functions are also provided via ONWAVE service blades, transparently combining OC-3/12/48 and SDH equivalent framed signals into OC-48 or OC-192 wavelengths. Overhead transparency is incrementally provisionable to allow conventional or transparent transport, enabling applications such as router inter-connect or carriage of sub-tending BLSR ring traffic. Additionally, on-board SONET switching provides STS-1 level grooming, as well as SONET/SDH gateway functionality. Two ADM blades mated in a shelf replace what was previously a shelf or rack of conventional ADM equipment.



FEATURES & BENEFITS

- » Leads industry in aggregation and native transport for virtually any type of traffic—including data, storage, voice and video.
- » Provides sub-wavelength multiplexing efficiency for lowered transport cost per bit
- » Offers ADM capability for sharing wavelength between multiple sites
- » Includes enhanced Performance Monitoring and OAM&P for data, storage and SONET/SDH
- » Simplifies provisioning, upgrades and node insertions via dynamic optical power management
- » Features enhanced reach options for regional deployment
- » OSMINE certified
- » Meets EMC®, IBM® and HDS® environment qualifications