

# DUAL-FC8 MODULE

## For the 4200 Family

### Features and Benefits

- Reduces power and space costs by delivering 2 x 8G Fibre Channel services in a single slot for any 4200 Advanced Services Platform chassis
- Increases service velocity through pluggable optics used at both line side and client side
- Features optimization for data center interconnect and storage transport applications
- Offers dual functionality as controller module for 4200/4200MC chassis, reducing footprint and initial service cost
- Supports 2G/4G/10G FC rates with software upgrade

The Dual-FC8 Module enables customers to keep pace with higher Fibre Channel (FC) data rates used on storage switches in modern data centers by supporting the 8G FC rate.

The Dual-FC8 provides a dense solution that reduces footprint and lowers operational cost by carrying multiple FC services on a single slot module. The Dual-FC8 is architected to support a variety of FC client signals (8G FC supported now, with 2G/4G/10G to be enabled in a future software release) to cover the full spectrum of application requirements. The Dual-FC8 is ideally suited to data center interconnect and storage transport applications, for use in a dedicated enterprise network, or as a carrier managed service delivered by a service provider.

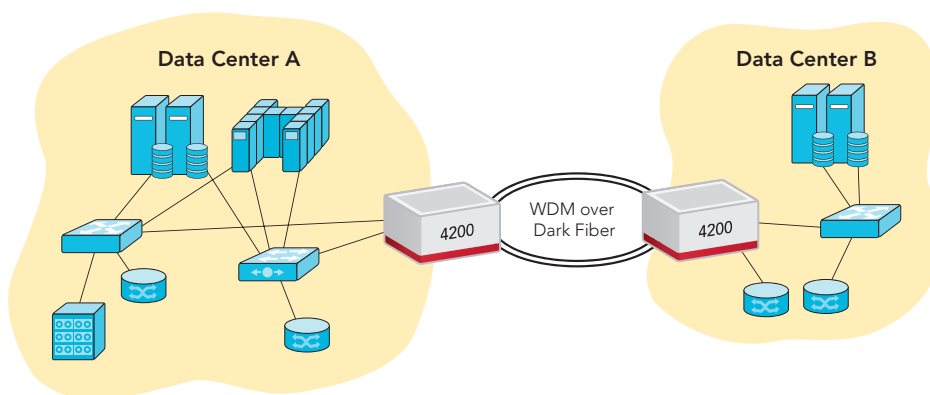


Figure 1. Enterprise data center networking solution

The Dual-FC8 operates as a dual transponder for 8G/10G FC applications and as a muxponder for 2G/4G FC applications, which reduces operational costs through the use of a single module for all FC applications. The Dual-FC8 has two line (XFP) and three client (SFP+) ports that can be provisioned individually to give the system